



Severfield

# PRV350 Pressure Relief Valve



+44(0) 1944 710421



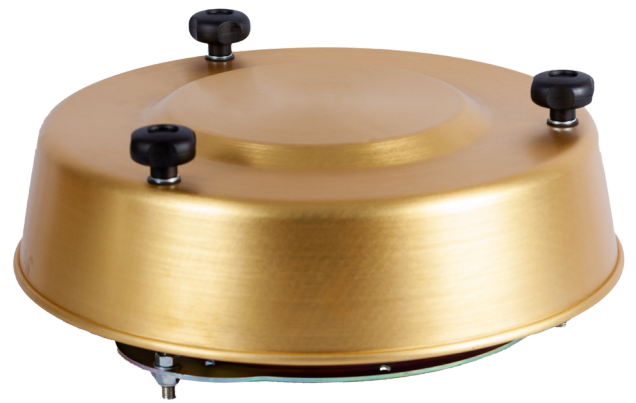
info@severfield.com



www.severfield.com



PRV350 combined pressure and vacuum relief valve is primarily designed for protection of silos from damaging over and under pressures encountered during filling and emptying. The valve is available in a number of different materials and gasket combinations for a wide range of applications and industries. A range of upstands and adapters is also available for new and retrofit applications.



## Pressure Relief Valve Technical Specification

Protecting silos from over-pressurisation

- Sized for 13000m<sup>3</sup>/hour outflow
- Sized for 5000m<sup>3</sup>/hour inflow
- Quick release cover
- External springs - high tolerance to dust
- Large capacity 350mm diameter with long travel springs
- Fully compliant with HSE guidelines
- Suitable for pressures up to 900mm w.g. and vacuum up to 250mm w.g.



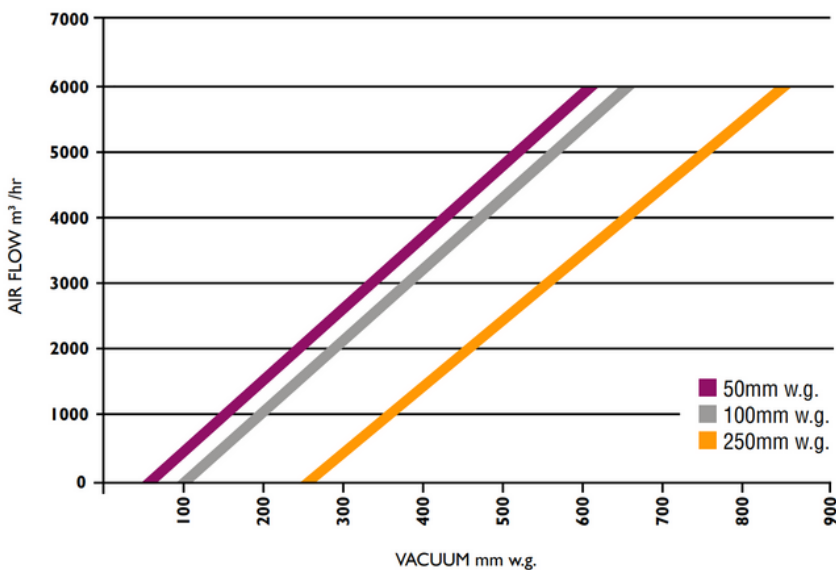
For more information on our Pressure Relief Valve, please get in touch.

# PRV350 Pressure Relief Valve

Capacity curves are given for both out-breathing and in-breathing.

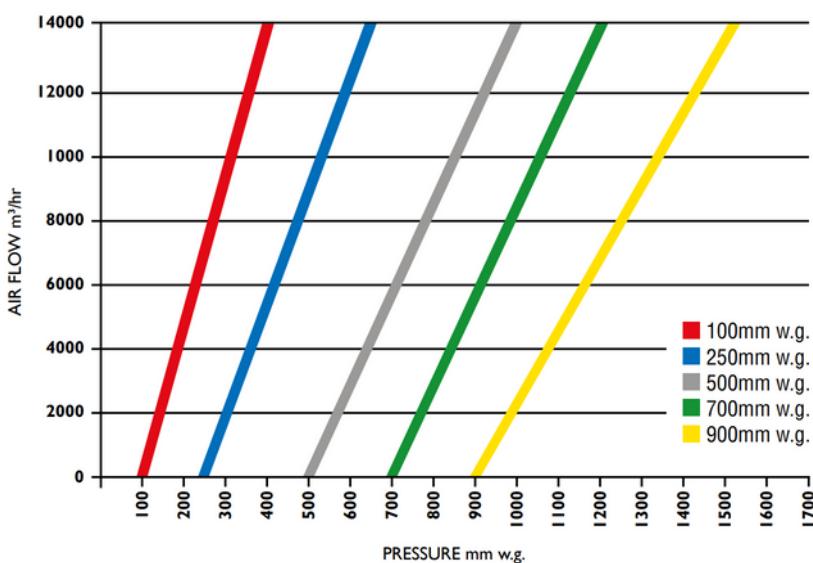
IT IS IMPORTANT THAT PURCHASERS ENSURE THE VALVE IS LARGE ENOUGH FOR THE INTENDED APPLICATION.

Advice on surge air flows from tankers is available in HSE publication ISBN: 0-9540853-0-2 June 2001.



## In-breathing

Valve spring compressed length is set to 55mm as standard for in-breathing duty. This will give the range of lift vacuum as indicated on the adjacent graph. Additional adjustment of  $\pm 15\%$  of the nominal lift vacuum is possible by corresponding adjustment of spring length.



## Out-breathing

Valve spring compressed length is set to 80mm as standard for out-breathing duty. This will give the range of lift pressure as indicated on the adjacent graph. Additional adjustment of  $\pm 15\%$  of the nominal lift pressure is possible by corresponding adjustment of spring length.

# Valve Ordering Instructions

**P R V 3 5 0 - I I 500 100 0 0**

## Material Code

- 1 - Carbon Steel
- 2 - 304 Stainless Steel
- 3 - 316 Stainless Steel
- 4 - Special (please specify)

## Gasket Options

- 1 - Standard EPDM
- 2 - Food Grade
- 3 - Special (please specify)

## Pressure Settings

Stock settings specify 100, 250, **500**, 700 or 900 for alternative settings, specify required lift pressure in mm w.g. Note: an additional setting charge will apply

## Ancillaries

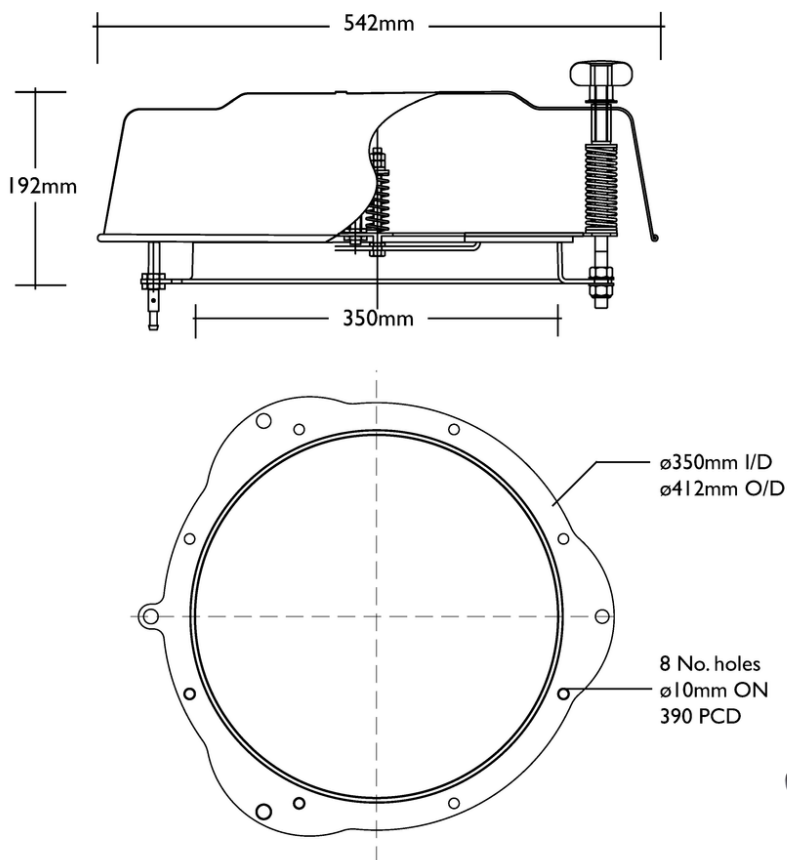
- 0 - None
- 1 - Proximity sensor on under pressure
- 2 - Proximity sensor on over pressure
- 3 - Proximity sensor on both.
- 4 - Proximity sensor on under pressure ATEX CAT I
- 5 - Proximity sensor on over pressure ATEX CAT I
- 6 - Proximity sensor on both ATEX CAT I

## Adapter / Upstand

- 0 - None
- 1 - Weld on
- 2 - Flanged retro-fit
- 3 - Clamp-on retro-fit
- 4 - Special (please specify)

## Vacuum Settings

Stock settings specify 50, **100** or 250 for alternative settings, specify required lift pressure in mm w.g. Note: an additional setting charge will apply





OFFLI  
ARE  
USE  
ONL

 Severfield

## Pressure Relief Valve

PRV350 combined pressure and vacuum relief valve is primarily designed for protection of silos from damaging over and under pressures encountered during filling and emptying. The valve is available in a number of different materials and gasket combinations for a wide range of applications and industries. A range of upstands and adapters is also available for new and retrofit applications.



+44(0) 1944 710421



info@severfield.com



www.severfield.com